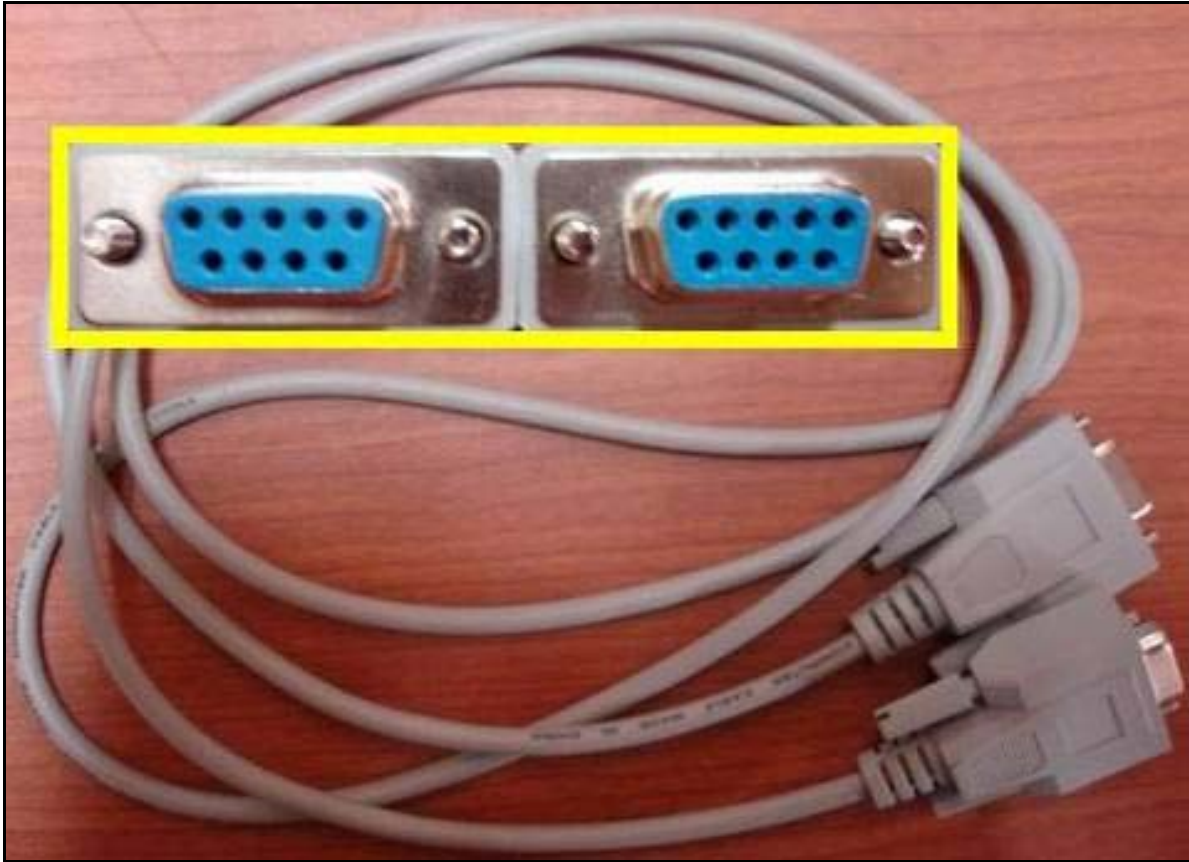


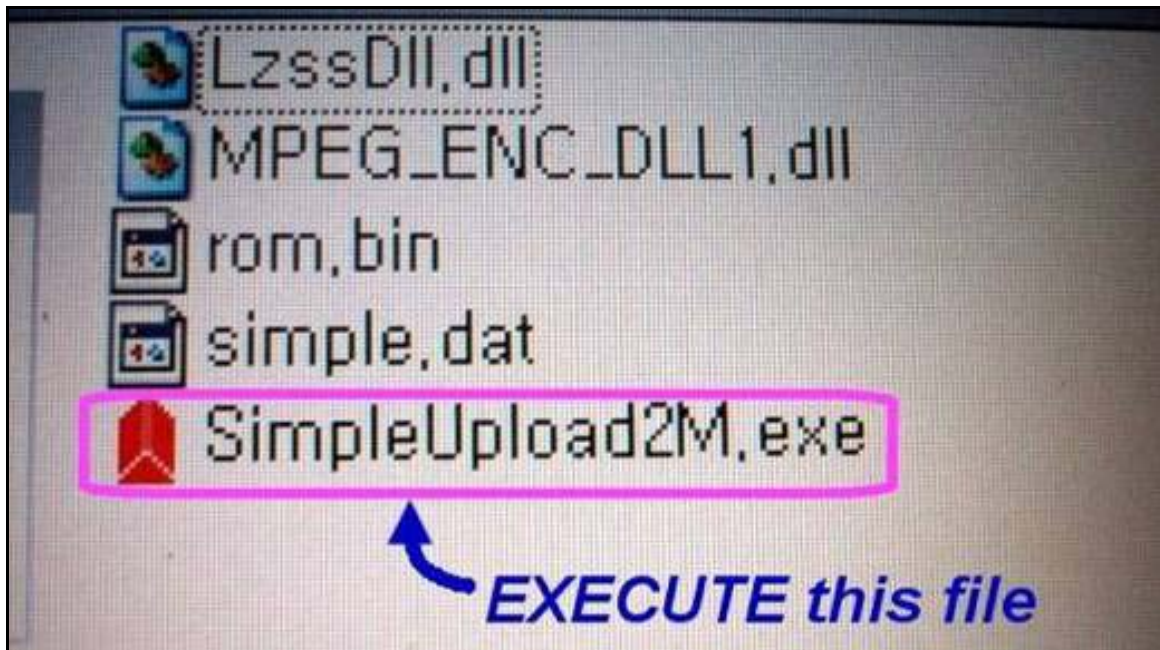
1. Prepare RS-232 cable (connector type is female for both ends)



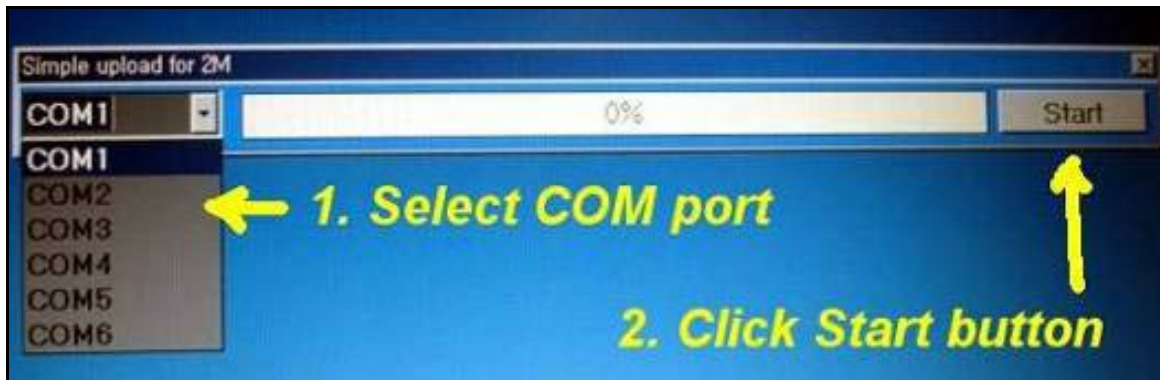
2. Connect Receiver and PC with RS-232 cable.



3. Prepare upgrade programs and RUN marked file



4. Select COM port of PC and Click START button



(Try other COM ports also, if failed)

5. Click OK button when prompted as below.



6. Downloading procedure proceeding (Flash writing)



7. When completed, popup displayed and receiver boot automatically

